

PART OF N.W. 1/4, SECTION 33, T.6N., R.2W., S.L.B. & M.

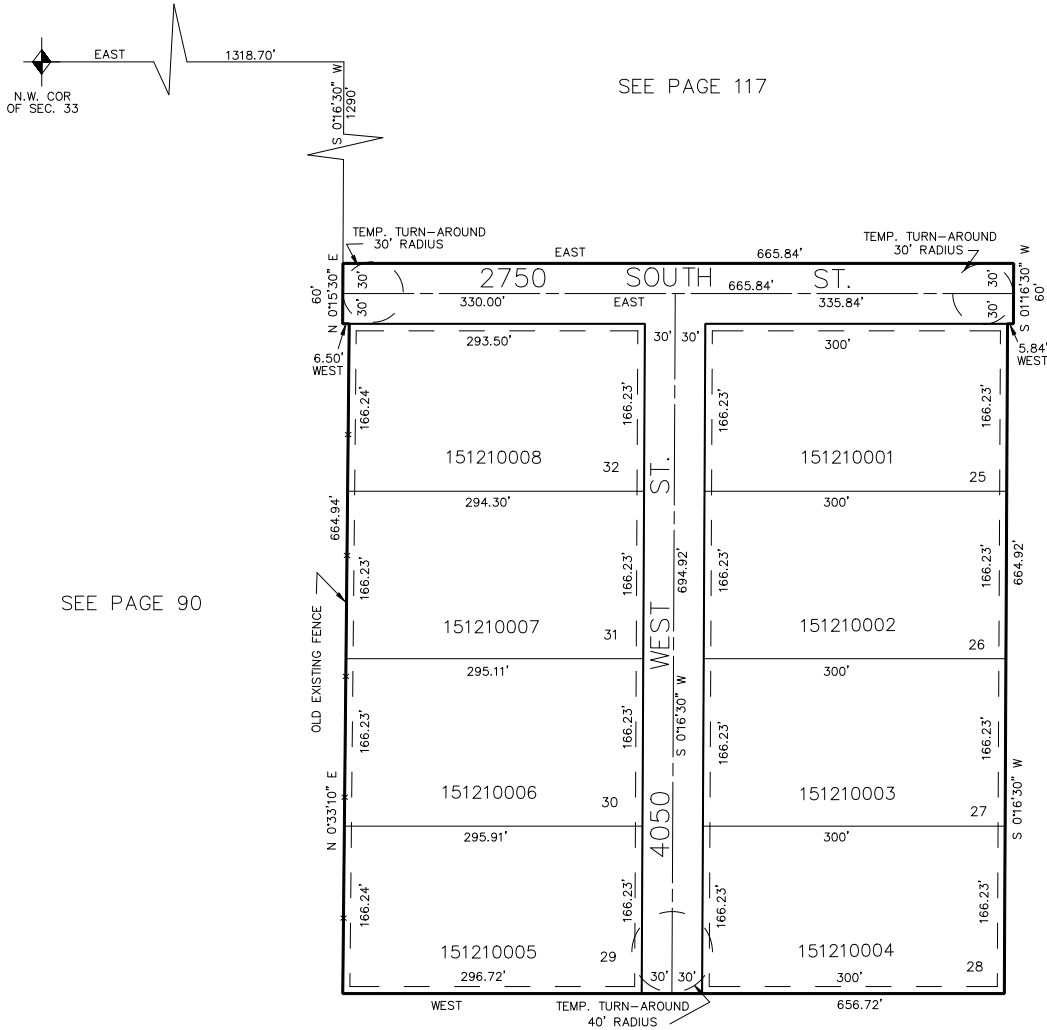
121

VALLEY GREEN ESTATES NO. 3

IN WEBER COUNTY

SCALE 1" = 100'

TAXING UNIT: 53



7' UTILITY & DRAINAGE EASEMENTS EACH
SIDE OF PROPERTY LINES AS INDICATED
BY DASHED LINES EXCEPT AS OTHERWISE
SHOWN.

FOR COMPLETE ENG DATA SEE
ORIGINAL DEDICATION PLAT IN
BOOK 18, PAGE 39 OF RECORDS.